



# Lions Park Redevelopment, Streaky Bay

## Landscape Concept Plan

February 2023



# Lions Park Redevelopment

Project No. 22L10 Date of Issue 14.02.23



## Site Context: Photographic Survey



1. Parallel parking adjacent dump point/toilet area on East Terrace
2. Public toilet, rubbish collection and black water waste collection
3. Intersection of Wells St and Mudge Tce
4. Stack stone walling raised garden bed to dead-end of Mudge Tce, storm water drainage channel
5. Park entry & signage from Alfred Tce
6. Stone sculpture and timber barriers to park entry road, brick paved footpath connections to shelter and toilet
7. Timber picnic bench, isolated swing set in softfall mulch, low rock wall edging to Mudge Tce
8. Isolated play equipment in softfall mulch
9. Shelter with picnic bench seating, community information sign and paved footpath adjacent

# Lions Park Redevelopment

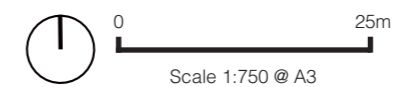
Project No. 22L10 Date of Issue 14.02.23



## Site Analysis: Existing Conditions



- Site Extents
1. Stack-stone raised garden bed to dead-end of Mudge Tce
  2. Brushed concrete footpath connections along Alfred Tce
  3. Informal vehicle crossover (entry/exit) to park
  4. Slotted kerb and shallow grassed swale
  5. Cluster of mature Tuart (Eucalyptus gomphocephala) mostly in good health
  6. Entry signage
  7. Informal access road and parking with island of vegetation and shade trees
  8. Timber log vehicle barriers to road edge
  9. Swingset and cubby in sofffall mulch with raised timber edging, picnic bench adjacent
  10. Octagonal shelter community information and picnic bench
  11. Meandering brick paved footpath connections
  12. Stack-stone tiered raised garden bed with limited planting
  13. Parallel parking/waiting bay
  14. Black water dump point
  15. Public toilet
  16. Mixed native and exotic understorey with sparse tree planting
  17. Informal rock edging between park and road
  18. Pedestrian connection to Mudge Tce

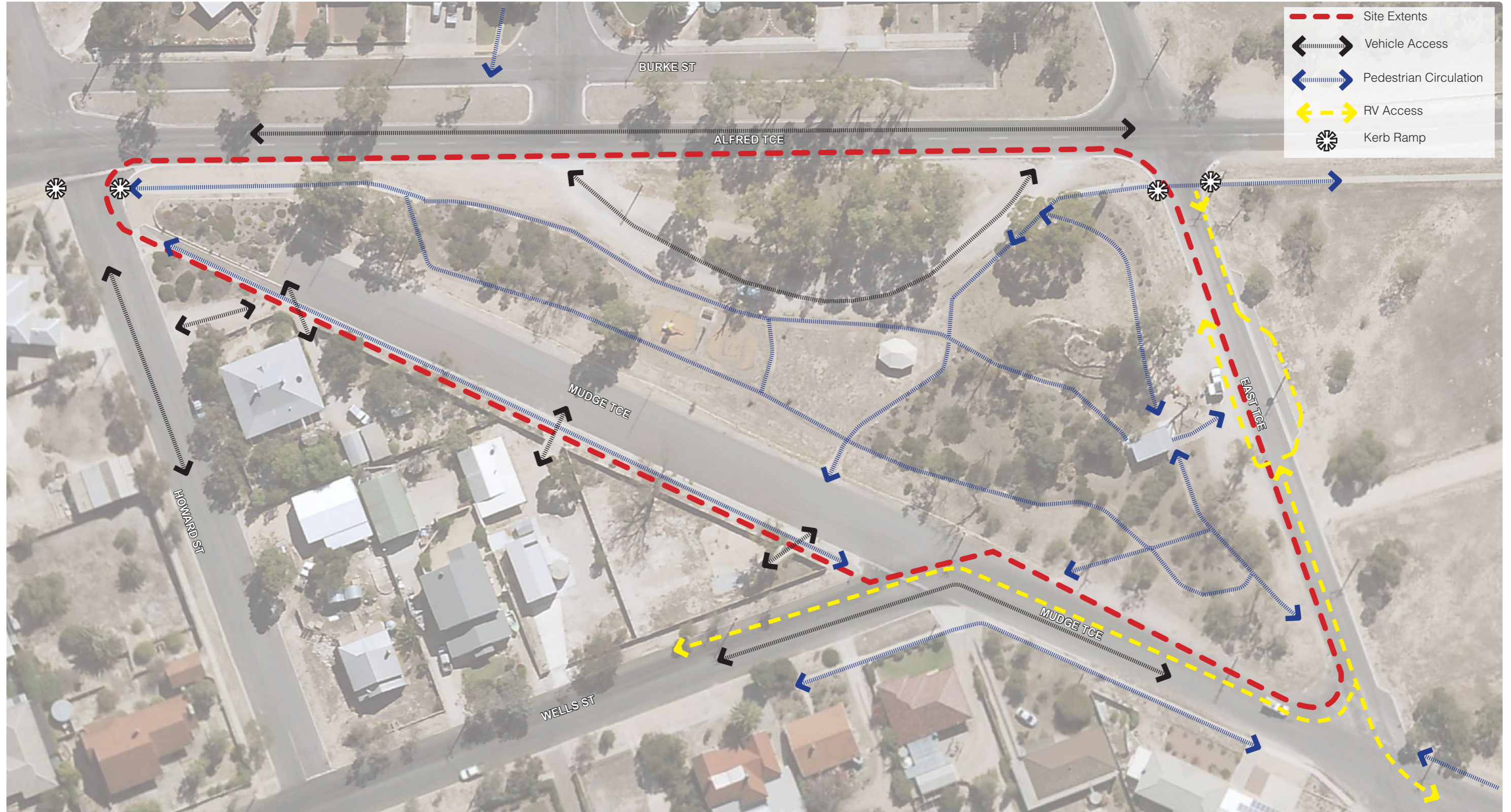


# Lions Park Redevelopment

Project No. 22L10 Date of Issue 14.02.23



## Site Analysis: Access and Movement

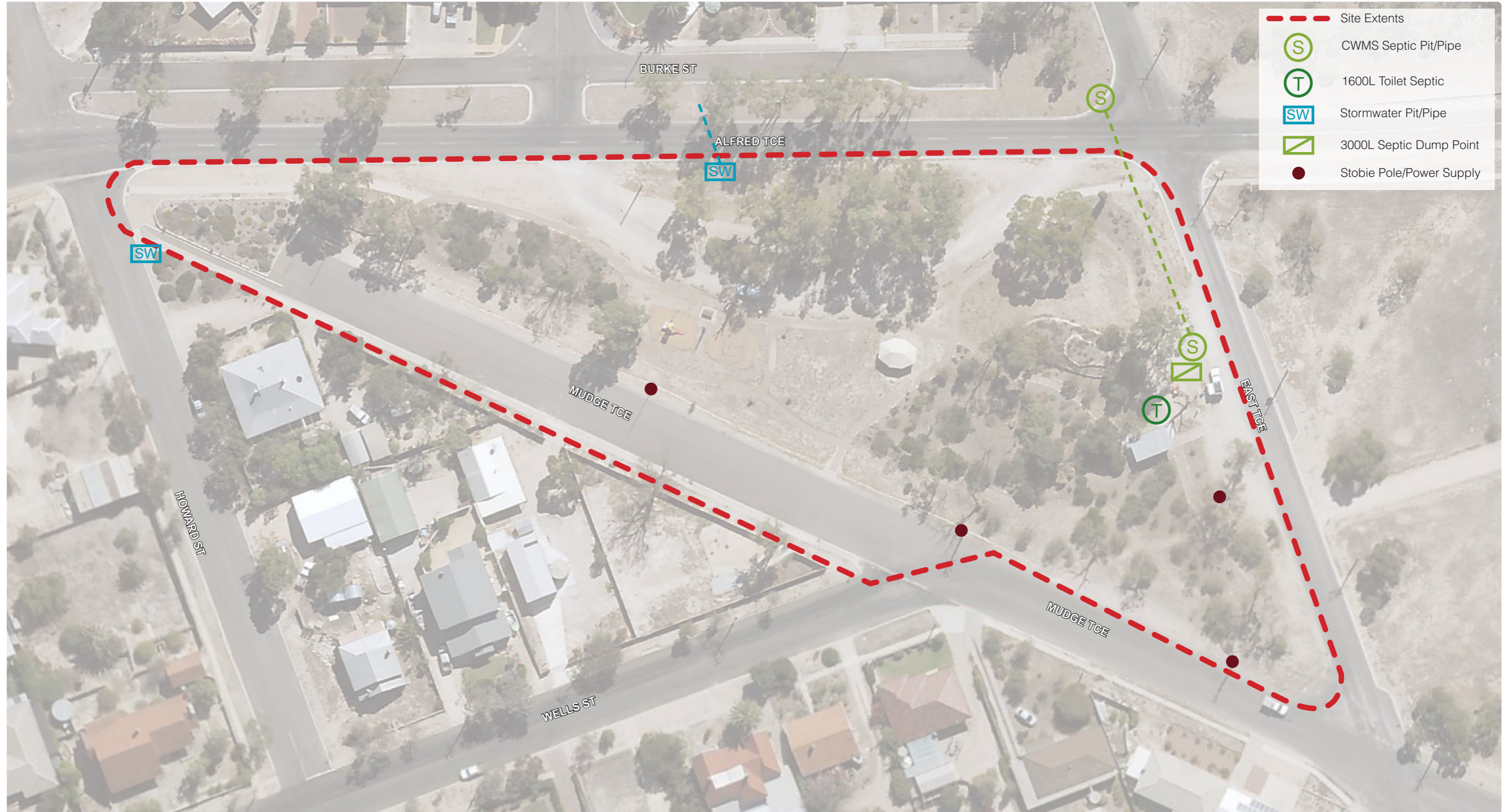


# Lions Park Redevelopment

Project No. 22LIO Date of Issue 14.02.23



## Site Analysis: Existing Infrastructure and Services



# Lions Park Redevelopment

Project No. 22L10 Date of Issue 14.02.23

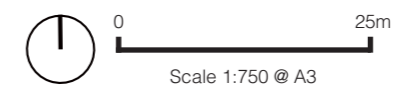


## Return Brief:



--- Site Extents

1. Lack of natural shade, retain existing trees & provide new legacy shade trees
2. Amenity lawn required for open space socialisation & congregation
3. Existing stone walled garden beds to be reviewed for retention and replanting
4. Provide a family destination for 30mins 'stop off' for visitors to orientate themselves to the township amenity provision
5. Provide community destination for social gatherings including a barbecue, shelter & picnic table
6. Existing toilet to be removed with new septic toilet including a drinking fountain located central to reserve
7. Existing playground requires replacement, provide new nature based play provision for a diverse age range, so there is 'something for everyone'
8. Create a sense of arrival for visitors, with formalised entry to reserve & new signage outlining township amenity
9. Review opportunity to reduce Mudge Terrace north of Wells St to a single lane way access road for local residents, & create a more direct corner manoeuvre to connect Mudge/Wells in an east/west direction.
10. Widen reserve south into existing Mudge Terrace roadway to increase open space amenity of reserve
11. Improve traffic flow on East Terrace opposite black water point with RV turning circles.
12. Provide 2 x RV parks adjacent black water point, in addition to the 2 new parks installed on the eastern side of the road
13. Review alignment of entrance road to Alfred Terrace and proximity of access point to junction. Bitumen to internal crescent road and include several pull in car parks to southern end
14. Opportunity for passive storm water harvesting including swales, detention basin, and discharge to adjacent stormwater pit.



# Lions Park Redevelopment

Project No. 22L10 Date of Issue 14.02.23



## Concept Plan: Spatial Mapping



- - - Site Extents
- █ Open Space
- █ Nature Play
- █ Water Sensitive Urban Design
- █ Formal Garden (Irrigated)
- █ Native Scrub (Un-irrigated)
- █ Arrival Landscape
- █ Dump Point/RV Node
- █ Carparking
- ↔ Vehicle Access
- ↔ Pedestrian Circulation
- ↔ Play Connection

### Benefits of Water Sensitive Urban Design

- Improved stormwater quality, resulting in improved water quality in surrounding waterways and bays
- Flood mitigation by intercepting site catchment areas and depressions
- Improved biodiversity as a result of introduced typologies
- Increased levels of site permeability and soil moisture
- Greater water resource efficiency and minimised use of mains water
- Overlap with surrounding site program and encourage positive interactions between users and nature



# Lions Park Redevelopment

Project No. 22L10 Date of Issue 14.02.23



## Concept Plan: Overall





# Lions Park Redevelopment

Project No. 22LIO Date of Issue 14.02.23



## Concept: Arrival & Playspace



1. Timber post rope challenge course in softfall sand
2. Timber deck/bridge over swale
3. Split log balance
4. Log and rock steppers through swale
5. Rock scramble mound (midden)
6. Swale/detention basin (capture & manage stormwater) with new peripheral planting & 12 new mature replacement trees for Tuarts
7. Rock mound with tunnel
8. Log cubby in quarry fines
9. Carved log balance & steppers, & timber pogo sticks
10. Basket swing with softfall rubber surrounds
11. Existing trees retained & shrubs
12. 4-5 parallel parking bays (2.1m w x 6.2m l) for cars, RV & caravans
13. Designated pedestrian entry points
14. New bins, drinking fountain & bottle refill station & information sign
15. Informal quarry fines paths
16. New concrete pedestrian paths (aligned with existing where possible)
17. Log yarning circle in quarry fines
18. New toilet & drinking fountain facilities
19. Bush foods garden in existing Quandong orchid
20. Existing toilet block removed, new screen planting area
21. Existing black water dump point retained with new access path
22. Increased vehicular access to existing dump point
23. Bin location
24. New shade trees (several relocated from site)
25. Existing rock walled garden bed tidied & 30% new plantings
26. Mulch lined informal path with recycled rock edging
27. Existing shelter refurbished with new bbq adjacent
28. New road entry point with stone wall & signage
29. Existing stone plinth
30. New tree planting & garden bed buffer to northern side of playspace
31. Recycled site paver path



# Lions Park Redevelopment

Project No. 22L10 Date of Issue 14.02.23



## Concept : Openspace



1. Existing rock walled garden bed tidied & 30% new plantings
2. New concrete pedestrian paths (aligned with existing where possible)
3. Spray seal road (5m wide & one-way) with flush concrete kerb edge
4. Swale/detention basin (capture & manage stormwater)
5. Log and rock steppers through swale
6. Open lawn (irrigated)
7. Parallel parking bays (4 x 2.3m w x 6.2m l)
8. Native planting buffer (irrigated)
9. Pedestrian access path connections
10. Timber deck/bridge over swale
11. New picnic table facilities
12. Timber post rope challenge course in softfall sand
13. Recycled site rock edging
14. Timber pod seat
15. New bench seating
16. Sculptural timber carvings (eagle, wombat & seal)
17. Native planting
18. Existing trees & vegetation retained (pruned & mulched as required)
19. Traffic calming node
20. Recycled site paver path

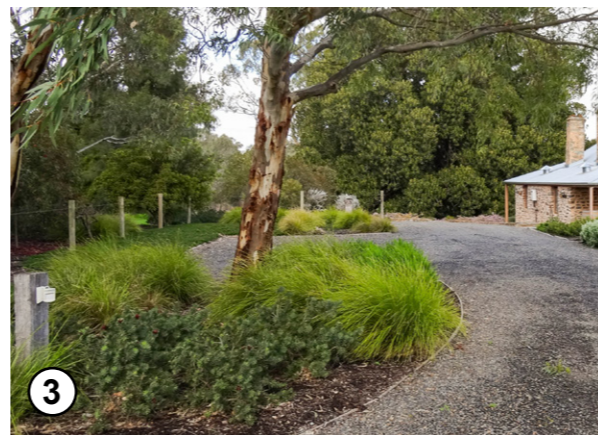
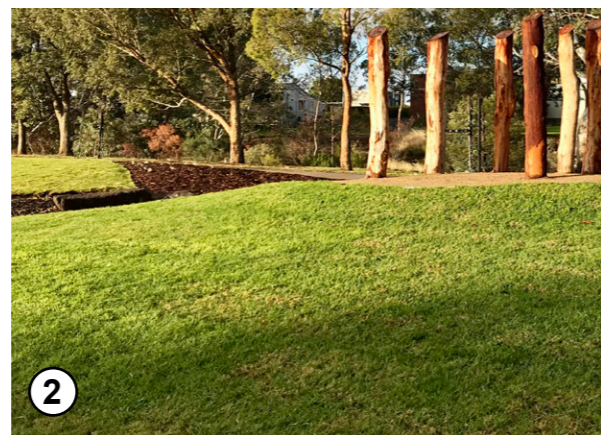


# Lions Park Redevelopment

Project No. 22L10 Date of Issue 14.02.23



## Moodboard



1. Shelter with picnic tables and lighting (10 x 4m)
2. Open lawn (irrigated)
3. Parallel parking bays
4. Stone entrance wall
5. New toilet facilities with lighting and external drinking fountain
6. New paved footpaths
7. Formalised native planting
8. Log yarning circle in quarry fines
9. Informal quarry fines access path
10. Swale/detention basin (capture & manage stormwater)
11. Native planting (irrigated)
12. Timber deck/bridge over swale
13. Log cubby in quarry fines
14. Split log balance
15. Timber post rope challenge course in softfall sand
16. Rock mound with tunnel
17. Timber pogo sticks
18. Carved timber sculpture